

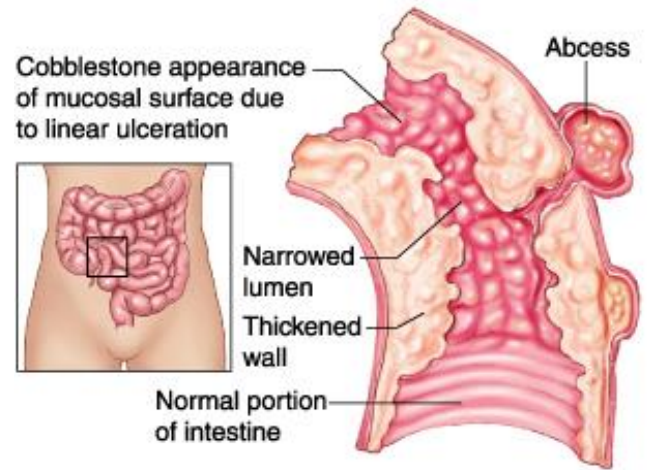
Crohn's Disease

Incidence of Crohn's Disease is 10 per 100000 annually

Prevalence of Crohn's Disease is 100 per 100000

Clinical Feature

- Abdominal Pain
- Diarrhoea
- Weight Loss
- Anaemia



Extraintestinal Manifestations

Association of Crohn's Disease with extragastrointestinal manifestations with HLA B27

- a. Eyes
 - Uveitis
- b. Liver and Biliary Tree
 - Primary Sclerosing Cholangitis
 - Fatty Liver Disease
 - Chronic Hepatitis
 - Cirrhosis
 - Gallstones
- c. Skin Rashes
 - Pyoderma Gangrenosum
 - Tissue becoming necrotic
 - 'Typical' ulcerative form occurs in legs
 - 'Atypical' occurs in superficial and other parts of body
 - Erythema Nodosum
 - Inflammation of Adipocytes
 - Rounded nodules
 - Nodules occur under skin
- d. Joints
 - Type I [Pauarticular] Arthropathy
 - Pauarticular----> Less than 5 joints involved
 - Acute attacks which occurs with IBD relapse
 - Associated with other extraintestinal manifestations of IBD activity
 - Type II [Polyarticular] Arthropathy
 - Polyarticular----> More than 5 joints involved
 - Last from months to years
 - Independent of IBD activity and usually associated with uveitis
 - Ankylosing Spondylitis
 - Sacroiliitis
- e. Venous Thrombosis
- f. Nephrolithiasis

Anal and Perianal Complications of Crohn's Disease

This is the presenting features in 25% of cases

- Perianal abscess
- Haemorrhoids
- Anal fissure
- Anorectal fistulae