

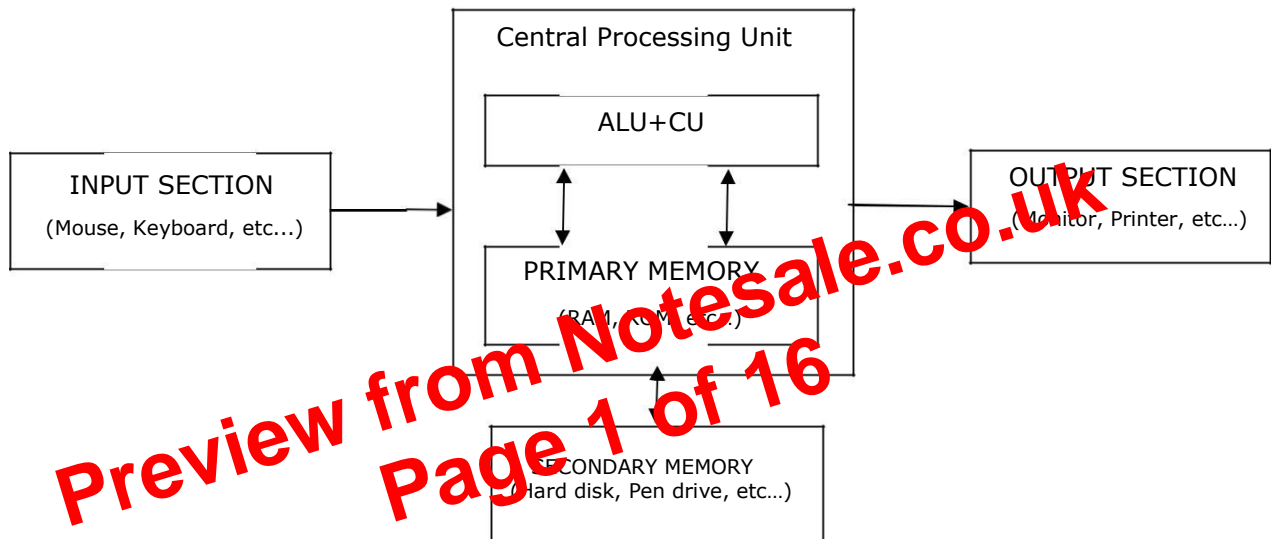
Computer Programming and Utilization (CPU) – 2110003

A) Computer Fundamentals

1 Draw the block diagram of computer architecture and explain each block.

Computer is made up of mainly four components,

- 1) Central processing unit (CPU)
- 2) Input section
- 3) Output section
- 4) Storage devices

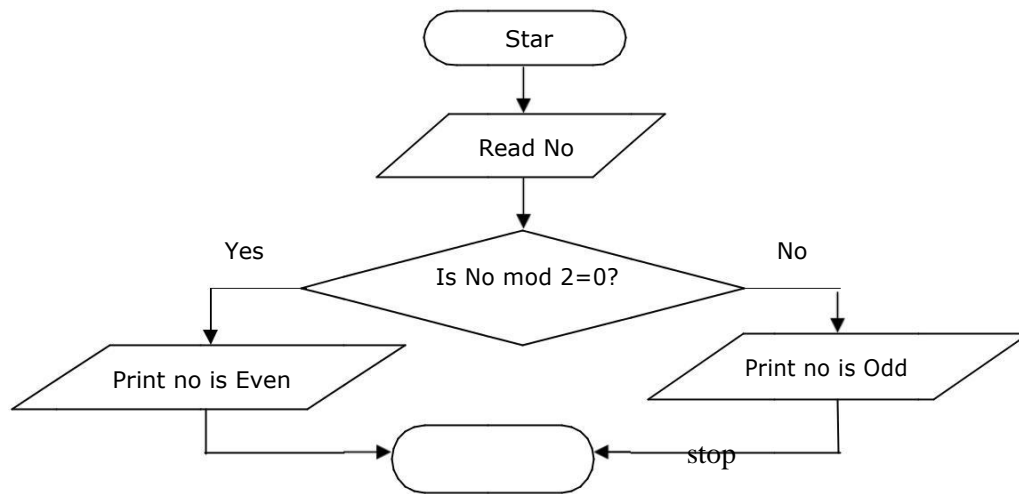


1) Central Processing Unit (CPU):-

- Central processing unit is a main part of the computer system.
- It contains electronics circuitry that processes the data based on instructions.
- It also controls the flow of data in the system.
- It is also known as brain of the computer.
- CPU consists of,

Arithmetic Logical Unit (ALU)

- ✓ It performs all arithmetic calculations and takes logical decision.
- ✓ It can perform add, subtract, multiply, compare, count, shift and other logical activities.
- ✓ It calculates very fast.
- ✓ It takes data from memory unit and returns data to memory unit, generally primary memory.



- To enter number still user wants and at the end it should display count of total number of positive, negative and zero entered.

Step 1 : Start

Step 2 : Initialize pos=0, neg=0, zero=0

Step 3 : Read no

Step 4 : If no>0, then goto 7

Step 5 : If no<0, then goto 8

Step 6 : Increment zero by 1, zero=zero+1. go to 9

Step 7 : Increment pos by 1, pos=pos+1. go to 9

Step 8 : Increment neg by 1, neg=neg+1. go to 9

Step 9 : Print "Do you want to enter more number?"

Step 10 : Read ans

Step 11 : If ans = "y", then goto 3

Step 12 : Print pos, neg, zero.

Step 13: Stop.

Preview from Notesale.co.uk
Page 10 of 16