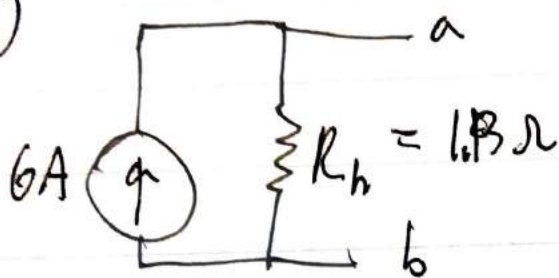


For Norton ^{E_n} Circuits,

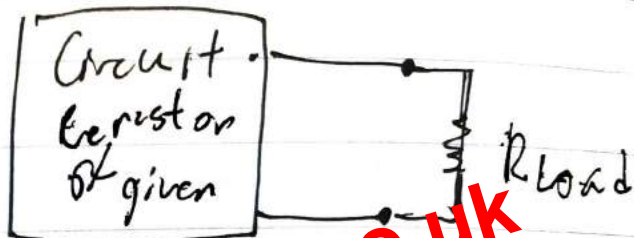
$$I_n = I_{sc}$$

$$R_n: \text{Find } V_{oc} \text{ such } R_n = \frac{V_{oc}}{I_{sc}}$$

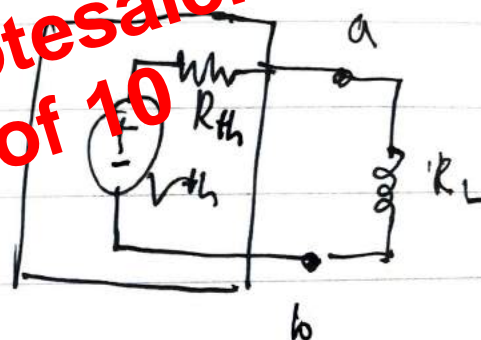
E.g



Maximum Power Transfer:



Preview from Notesale.co.uk
Page 8 of 10



What is the value of R_L to get max. dissipated power in R_L ?

Power dissipated in R_L :

$$P_L = i \Delta V = \frac{(\Delta V)^2}{R} = i^2 R$$

$$= i_L^2 R_L = \left(\frac{V_{th}}{R_L + R_{th}} \right)^2 R_L = V^+$$