

COLLEGE OF ENGINEERING
FINAL EXAMINATION
MECHATRONICS SERVICING NCII - (CORE COMPETENCIES)

NAME: kyleganda

COURSE: BSECE

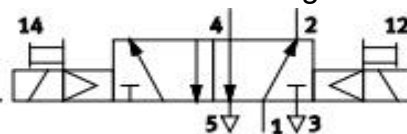
Instruction: **Encircle the best answer**

1. This component has the capability to interlocks a mechanical motion or position with electrical circuits.
 a) Limit switch
b) sensor
c) pushbutton switch
d) actuator
2. The configuration in electropneumatic control using switches to control the solenoid valve.
 a) Direct control
b) Indirect control
c) Semi-automatic control
d) Automatic control
3. Signal flow in electro-pneumatic control system where actuator or optical display is installed.
a) Command execution
 b) Signal output
c) Signal processing
d) Signal input
4. Used to smooth and maintain constant voltage of the PSU.
 a) transformer
b) stabilizer
c) rectifier
d) inverter
5. The component symbol below is use to actuate relay or solenoid valve.



- a) Pressure sensor
b) Electronic proximity sensor
c) Optical proximity sensor
d) Capacitive proximity sensor

6. The directional control valve shown below is used to control the double acting cylinder in a desired control procedure, what is the detail of the given component?



- a) 5/3 way double acting cylinder with manual override.
b) 5/2 way double acting cylinder with double pilot and manual overrides.
 c) 5/3 way double acting cylinder with pilot, spring and manual override.
d) 5/2 way double acting cylinder with double spring return and manual overrides.
7. If it is necessary to modify the automation process, what is the possible action can be done.
a) Rewiring is necessary
b) Inputs and outputs are modified
 c) Change the PLC program
c) Replace the PLC with the latest version