


Standard Test Signals,

Parabolic Signal,

 The Parabolic signal imitate the constant acceleration characteristic of actual input signal.

Mathematical Representation

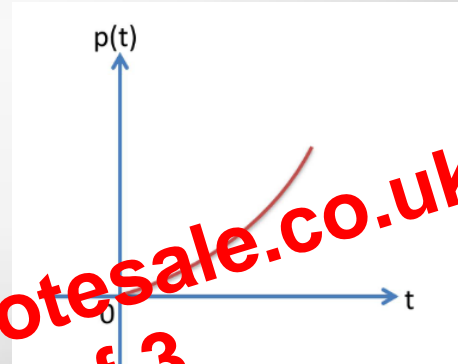
$$p(t) = \begin{cases} \frac{At^2}{2} & t \geq 0 \\ 0 & t < 0 \end{cases}$$

If $A = 1$, The Parabolic Signal is called as Unit Parabolic Signal

Laplace Transform,

$$R(s) = A/s^3$$

Graphical Representation



Preview from Notesale.co.uk
Page 3 of 3