

Glossary of Terms

Osteoblasts

- Cells responsible for bone growth by:
 - Creating the extra-cellular bone matrix

Osteoid

- Is the extra-cellular bone matrix (created by the osteoblasts)
- Primarily type I collagen + non-collagenous proteins

Osteocytes

- Result of calcification of the bone matrix cells
 - (1. The bone matrix (osteoid) is calcified by more osteoblasts.)
 - (2. The calcified matrix becomes encased with lacunae)
 - (3. Become Osteocytes)

Osteoclasts

- Cells responsible for bone resorption

Periosteum

- Dense layer of fibrous tissue on the outer surface of bone

Diaphysis

- Mid shaft of a long bone

Epiphysis

- Expanded articular ends of long bones

Epiphyseal Plate

- This is a hyaline cartilage plate that lies within the metaphysis, site of bone growth present in children & adolescents only

Epiphyseal Line

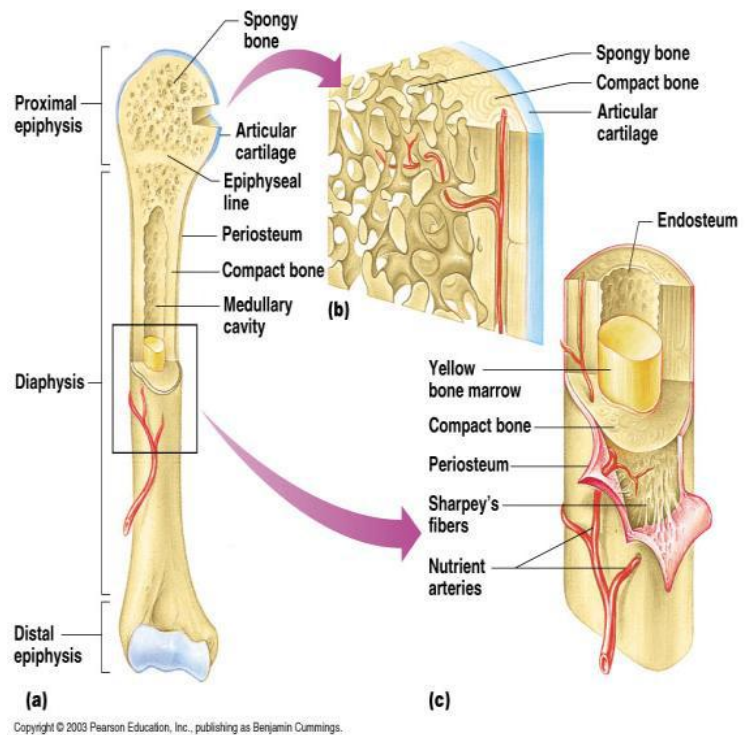
- Ossified Epiphyseal Plate observed in adults once bone growth has ceased

Endosteum

- Is a highly vascular membrane lining the marrow cavity of long bones E.G. Humerus

Medullary Canal/Cavity

- Central cavity within the shaft/centre of a bone where bone marrow is stored



Preview from Notesale.co.uk
Page 1 of 4