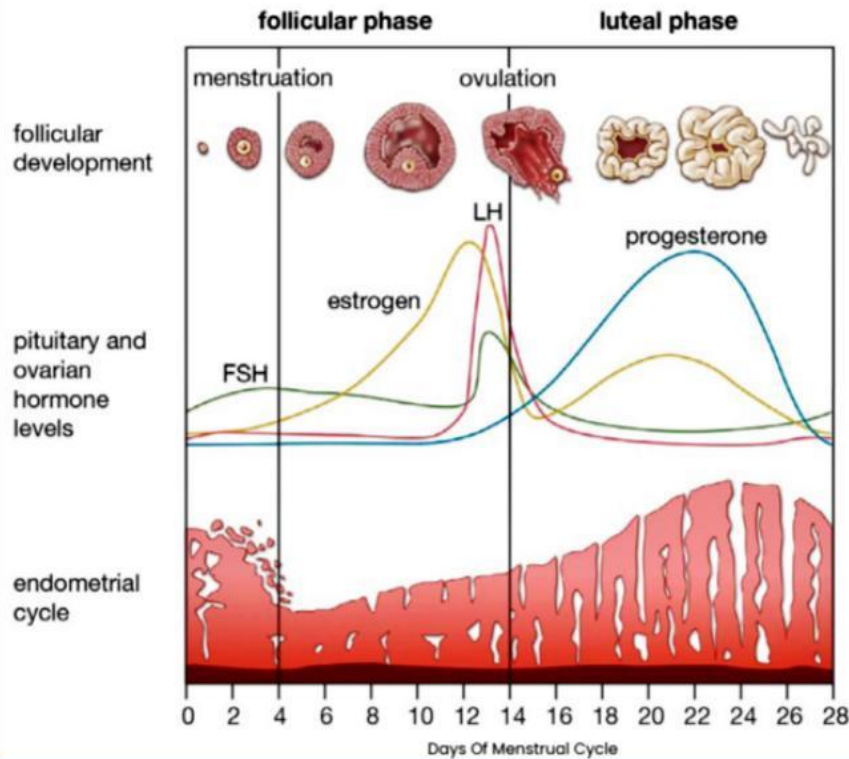


The menstrual cycle



- If ovum gets fertilized, endometrium is maintained by progesterone necessary for implantation and other events of pregnancy.
- During pregnancy all events of the menstrual cycle stop

Preview from Notesale.co.uk
Page 4 of 8

Menstrual Cycle

- Changes in the ovary and the uterine lining are caused by changes in the levels of pituitary and ovarian hormones

Phase	Duration	Hormones & their effects	Events in ovary	Events in uterus
Menstrual	3-5 days	Drastic decline in progesterone	Corpus luteum degenerates	• Breakdown of endometrial lining and its blood vessels which forms liquid that comes out through vagina constituting menstrual flow
Follicular or Proliferative phase	Variable	Gradual increase in FSH & LH that stimulate secretion of estrogen from follicles	Primary follicle gradually matures to Graafian follicle	• Endometrium regenerates through proliferation
Ovulation	14 day (Middle of cycle)	FSH and LH at peak, (LH surge)	Rupture of Graafian follicle and release of only one ovum/ cycle	• Proliferation of endometrium continues
Luteal or Secretory	Fixed (14 days)	Secretion of progesterone and estrogen	Remnants of the Graafian follicle transforms into corpus luteum	• Endometrium is maintained • If ovum remains unfertilized, endometrium is sloughed off, marking a new cycle