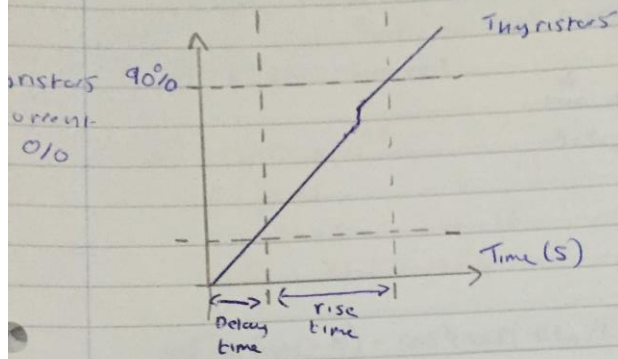


Thyristor Turn-on - Details



Turn ON time = time to 90% of final value
 = Delay time + rise time

Delay time = time to 10% of final value

Risetime = time for 10% to 90%

The turn ON time is limited by the rate of rise of current $\frac{di}{dt}$ or frequency of $\frac{dv}{dt}$.

Thyristors (& triacs) are triggered by short duration Gate pulses. The load current lags behind the supply voltage (inductive loads)

There is a risk of gate pulse not reaching latching current.

Preview from Notesale.co.uk
 Page 1 of 4