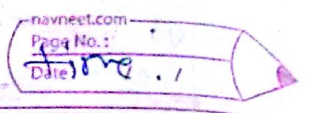


② Discontinuous load current :-

Here unlike 1st one $I_{min} = 0$ during off

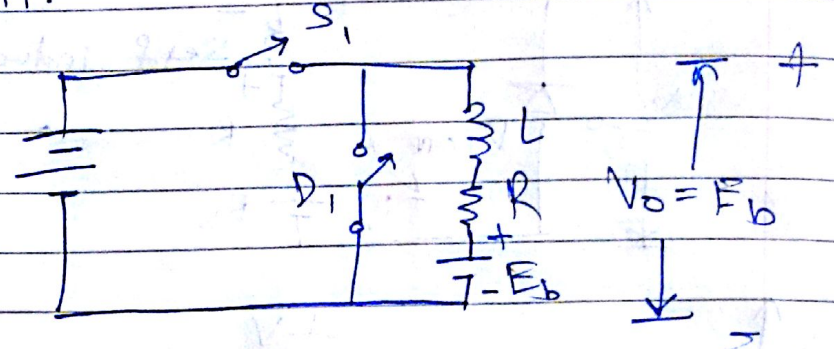


Here 3 modes of operation.

- ① $\rightarrow (0 \text{ to } t_1)$ ② $(t_1 \text{ to } t_2)$ ③ $(t_2 \text{ to } T)$.

1st two are as same as 1st type which is continuous load current.

③ $t_2 \rightarrow T$ \rightarrow



In this mode D_1 & S_1 both turned off. \therefore load current is zero but load Vtg is $+E_b$ of the DC source connected in series.

Preview from Notesale.co.uk
Page 6 of 8

